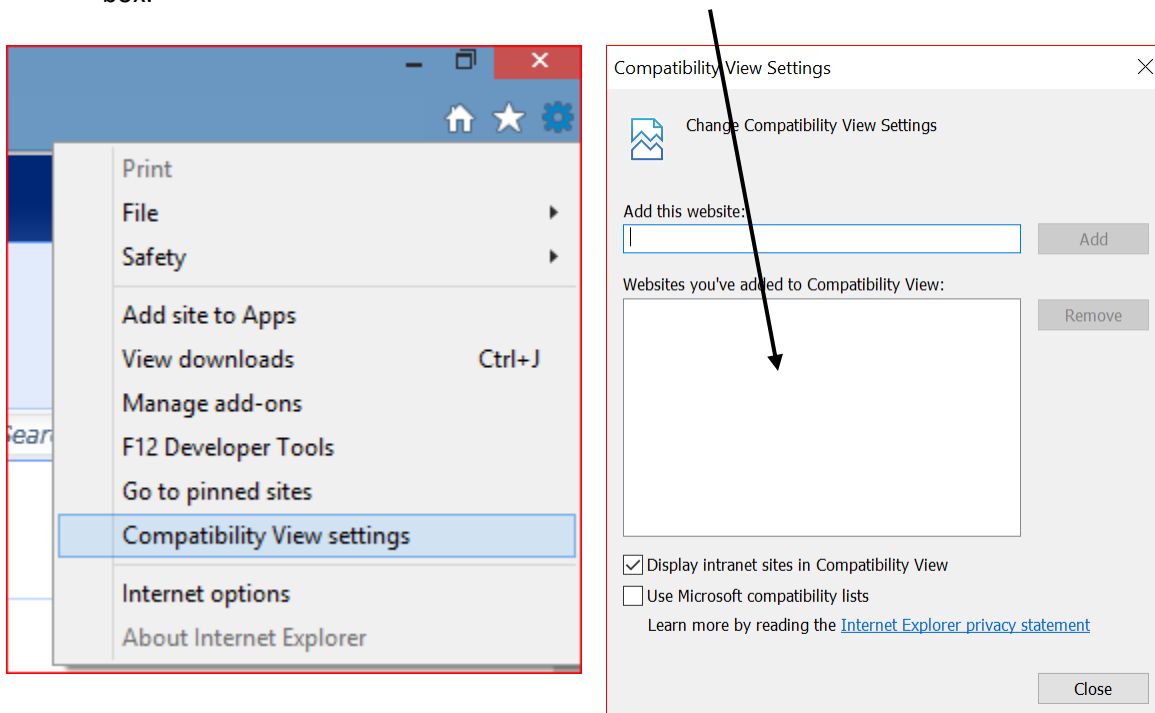


Compatibility Checklist for AlphaMCS users post build 2.04

It has come to our attention that a number of users are having issues utilizing Alpha MCS as we transition to Version 2 (HTML5). See instructions below to check your systems' compatibility. Internet Explorer is the recommended browser.

If you are seeing a blue screen, this is a compatibility issue or Javascript issue. You'll need to:

1. Clear your cache and cookies (recommended after every build)
2. Enable Java Script <https://www.whatismybrowser.com/guides/how-to-enable-javascript/internet-explorer>
3. Check the compatibility view settings: Make sure AlphaMCS is not listed in compatibility view box.



If you are seeing other issues like a white screen with random buttons or incomplete screens, this is a hardware or connection issue.

Here are the basic requirements you need to be running to handle HTML5:

For Windows: x86 or x64- based processor (Browsers must be in 32-bit mode) 1.6-gigahertz (GHz) or higher processor; 512MB RAM

Also, it is recommended that you are running IE11. Larger providers need to make sure that their IT departments have port 4545 open.

